



# GMT MONTHLY MEMBERSHIP PROGRESS REPORT

Results as of: 5/31/2020

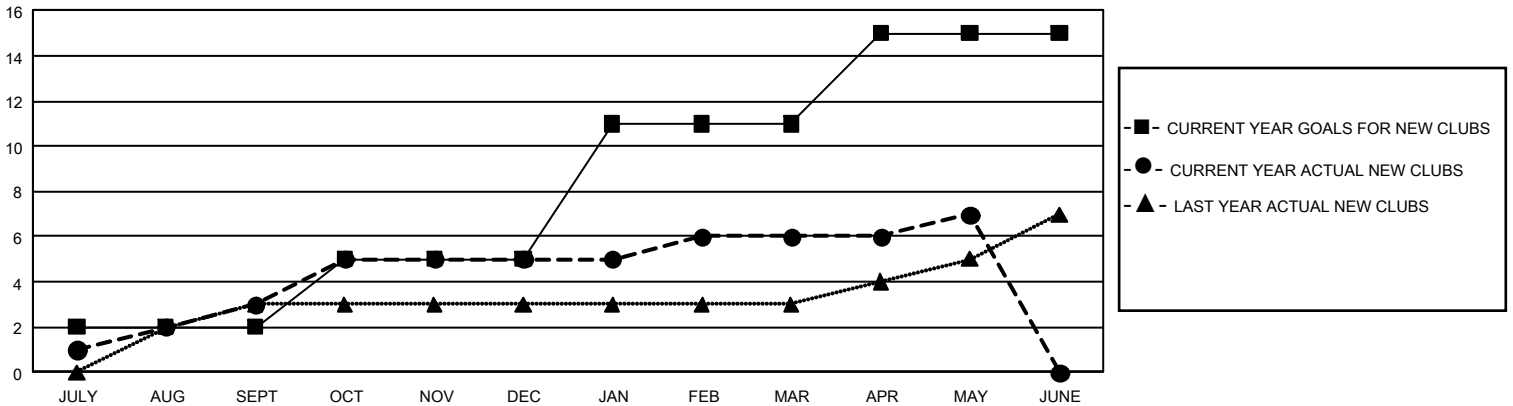
## GMT Constitutional Area 3, Group H

GMT: OPEN

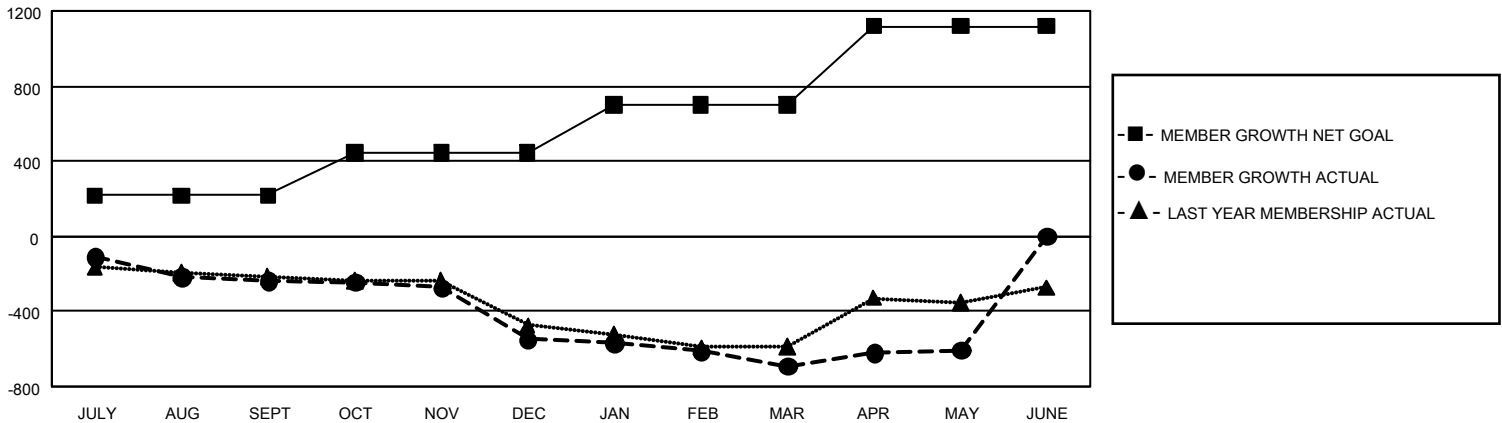
REPORT DOES NOT INCLUDE CLUBS IN UNDISTRICTED AREAS.

Clubs				Members			
RESULTS FOR 2019-2020				RESULTS FOR 2019-2020			
QUARTER	NEW CLUB GOAL	NEW CLUBS	DROPPED CLUBS	QUARTER	MEMBER GROWTH NET GOAL	MEMBER GROWTH ACTUAL	DROPPED MEMBERS ACTUAL (including transfers)
JULY/AUG/SEPT	6	3	3	JULY/AUG/SEPT	645	378	583
OCT/NOV/DEC	9	2	0	OCT/NOV/DEC	690	396	668
JAN/FEB/MAR	18	1	2	JAN/FEB/MAR	765	163	291
APR/MAY/JUNE	12	1	1	APR/MAY/JUNE	1,260	375	262

**GOALS AND ACTUAL NEW CLUBS CUMULATIVE**



**GOALS AND ACTUAL MEMBERS CUMULATIVE**



<b>DROPPED CLUBS: 6</b>	294 CLUBS OF 511 ADDED 1 OR MORE NEW MEMBERS	<b><u>GENDER DISTRIBUTION</u></b> MALE            7,828 (51.32%) FEMALE         7,425 (48.68%)
<b><u>DROPPED MEMBERS</u></b> DECEASED                    109 CLUB CANCELLED            58 OTHER                         1,637 <hr/> TOTAL                         1,804	<a href="#">CLICK HERE FOR CUMULATIVE MEMBERSHIP DATA</a>	TOTAL FAMILY UNIT MEMBERS            7,808  FAMILY MEMBERS PAYING HALF DUES       3,978